

## Bellows Suction Cups SAOB HT2 (Oval, 1.5 Folds)

Suction area (LxW) 60 x 30 mm and 80 x 40 mm



### Suitability for industry specific applications

#### Application

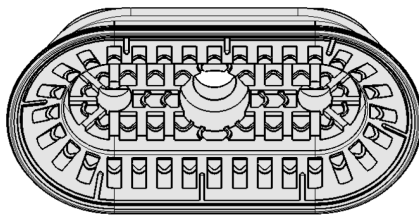
- Oval bellows suction cup with 1.5 folds for most dynamic handling of hot metal sheets up to 250 °C
- Unloading of elongated workpieces after forming, e.g. reinforced ribs and plates
- Handling of pre-shaped metal sheet parts, since bellows shape permits optimum adaptation
- Handling of thin aluminum sheets without deformation or deep drawing
- For use e.g. in feeder systems for press lines in the automotive industry



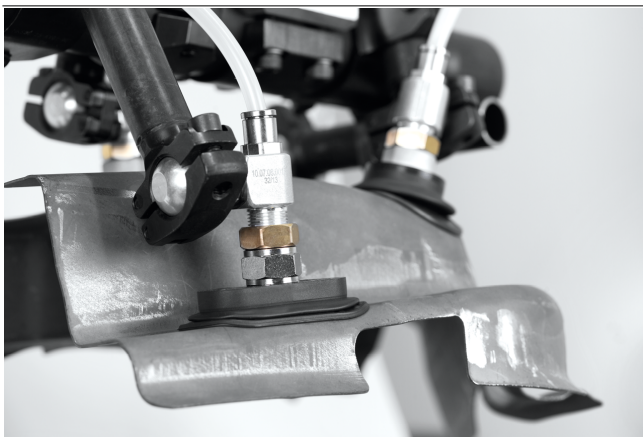
Bellows Suction Cups SAOB HT2 (Oval, 1.5 Folds)

#### Design

- Robust and wear-resistant oval bellows suction cup SAOB made of HT2 with 1.5 folds, single sealing lip and inner support
- Connection nipple glued to the reinforcing element of the suction cup (very high strength and temperature resistance)



System design Bellows Suction Cups SAOB HT2 (Oval, 1.5 Folds)



Bellows suction cups SAOB HT2 being used for handling formed sheet met... parts

#### Product highlights

- Silicone-free special material HT2 is free of LABS and temperature resistant up to 250 °C
- Large, structured inner support prevents deep drawing and withstands the highest lateral forces
- Soft, flexible sealing lip seals optimally, even on slight unevenness
- 1.5 folds adapt optimally to curved workpieces and offer very good damping

## Bellows Suction Cups SAOB HT2 (Oval, 1.5 Folds)

Suction area (LxW) 60 x 30 mm and 80 x 40 mm

### Designation code Bellows Suction Cups SAOB HT2 (Oval, 1.5 Folds)

|             |   |              |   |               |   |                |
|-------------|---|--------------|---|---------------|---|----------------|
| <b>SAOB</b> | - | <b>60x30</b> | - | <b>HT2-65</b> | - | <b>G3/8-IG</b> |
| 1           |   | 2            |   | 3             |   | 4              |

#### 1 – Abbreviated designation

| Code | Version         |
|------|-----------------|
| SAOB | 1.5 folds, oval |

#### 2 – Suction area

| Code          | LxW in mm       |
|---------------|-----------------|
| 60x30...80x40 | 60x30 and 80x40 |

#### 3 – Material

| Code   | Material                  |
|--------|---------------------------|
| HT2-65 | High temperature material |

#### 4 – Connection

| Code    | Connection                |
|---------|---------------------------|
| G1/4-AG | G1/4-AG (AG = male (M))   |
| G1/4-IG | G1/4-IG (IG = female (F)) |
| G3/8-IG | G3/8-IG                   |

Suction cup SAOB HT2, available in various dimensions, is delivered with connection nipple glued to elastomer part.

### Ordering data Bellows Suction Cups SAOB HT2 (Oval, 1.5 Folds)

| Type |       | Connection:    |                |                |
|------|-------|----------------|----------------|----------------|
|      |       | G1/4"-M        | G1/4"-F        | G3/8"-F        |
| SAOB | 60x30 | 10.01.06.02443 | 10.01.06.02442 | 10.01.06.02441 |
| SAOB | 80x40 | 10.01.06.02447 | 10.01.06.02446 | 10.01.06.02445 |

### Technical data Bellows Suction Cups SAOB HT2 (Oval, 1.5 Folds)

| Type |       | Suction force (-600 mbar) [N]* | Pull-off force [N] | Lateral force [N]** | Volume [cm <sup>3</sup> ] | Workpiece radius min. (convex) [mm] | Hose inner diameter (recom.) d [mm]*** |
|------|-------|--------------------------------|--------------------|---------------------|---------------------------|-------------------------------------|--|
| SAOB | 60x30 | 38                             | 55                 | 56                  | 10.5                      | 30                                  | 4                                      |
| SAOB | 80x40 | 65                             | 100                | 98                  | 21.8                      | 40                                  | 6                                      |

\*The specified suction forces are theoretical values at a vacuum of -0.6 bar and with a smooth, dry workpiece surface - they do not include a safety factor

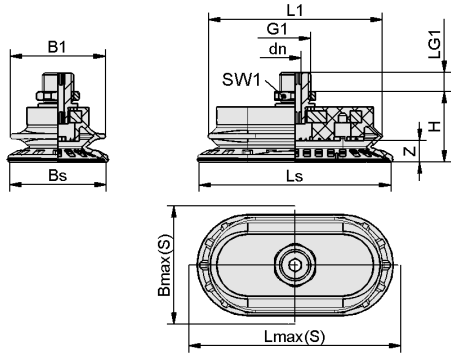
\*\*The specified lateral forces are values measured at a vacuum of -0.6 bar with a dry, smooth, flat workpiece surface. Depending on the workpiece surface and its quality, the actual values may deviate from these values.

\*\*\*The recommended hose diameter is based on a hose length of approx. 2 m

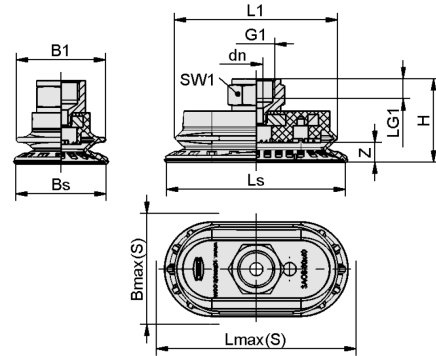
## Bellows Suction Cups SAOB HT2 (Oval, 1.5 Folds)

Suction area (LxW) 60 x 30 mm and 80 x 40 mm

### Design data Bellows Suction Cups SAOB HT2 (Oval, 1.5 Folds)



SAOB HT2 AG



SAOB HT2 IG

## Bellows Suction Cups SAOB HT2 (Oval, 1.5 Folds)

Suction area (LxW) 60 x 30 mm and 80 x 40 mm

### Design data Bellows Suction Cups SAOB HT2 (Oval, 1.5 Folds)

| Type*                           | B1 [mm] | Bmax(S)<br>[mm] | Bs [mm] | dn [mm] | G1      | H [mm] | L1 [mm] | LG1 [mm] | Lmax.(S)<br>[mm]** | Ls [mm] | SW1 [mm] | Z (Stroke)<br>[mm] |
|---------------------------------|---------|-----------------|---------|---------|---------|--------|---------|----------|--------------------|---------|----------|--------------------|
| SAOB 60x30<br>HT2-65<br>G1/4-AG | 31      | 33              | 30.6    | 5       | G1/4"-M | 27.0   | 56      | 8        | 63                 | 61      | 17       | 7                  |
| SAOB 60x30<br>HT2-65<br>G1/4-IG | 31      | 33              | 30.6    | 6       | G1/4"-F | 34.4   | 56      | 8        | 63                 | 61      | 17       | 7                  |
| SAOB 60x30<br>HT2-65<br>G3/8-IG | 31      | 33              | 30.6    | 6       | G3/8"-F | 35.0   | 56      | 9        | 63                 | 61      | 22       | 7                  |
| SAOB 80x40<br>HT2-65<br>G1/4-AG | 40      | 43              | 40.6    | 5       | G1/4"-M | 29.7   | 74      | 8        | 83                 | 81      | 17       | 9                  |
| SAOB 80x40<br>HT2-65<br>G1/4-IG | 40      | 43              | 40.6    | 6       | G1/4"-F | 37.2   | 74      | 8        | 83                 | 81      | 17       | 9                  |
| SAOB 80x40<br>HT2-65<br>G3/8-IG | 40      | 43              | 40.6    | 6       | G3/8"-F | 37.7   | 74      | 9        | 83                 | 81      | 22       | 9                  |

\*Acceptable dimensional tolerances for rubber parts concerning to DIN ISO 3302-1 E3

\*\*External dimension of the suction cup when it is pressed against the workpiece by the vacuum